

ANNUAL REPORT

pūrongo-ā-tau



2023/2024



Central Lakes
TRUST



OUR STRATEGIC PRIORITIES

INVESTMENT

Manage our investment portfolio to maintain our fund in perpetuity.

COMMUNITY

Address the needs and opportunities of our region in collaboration with stakeholders and community.

HIGH PERFORMING ORGANISATION

Ensure we have effective processes and resources in place to enable us to achieve our vision.

COVER IMAGE: Fun and games at the Lake Hayes Show. Photo: Lake County A&P Society

OUR VISION:
OUR COMMUNITY IS
A BETTER PLACE.

OUR MISSION:
WE ENHANCE ASSETS
AND ENRICH LIVES
BY SUPPORTING OUR
COMMUNITY.

OUR VALUES:

BE PRUDENT

Acting with wisdom and care to enhance the social and financial value of CLT

BE COLLABORATIVE

Working with others to identify priorities, improve performance and achieve great outcomes

BE OPEN

Being transparent, approachable and collaborative

BE PROACTIVE

Making things happen by identifying needs and opportunities and, when necessary, initiating change

HAVE INTEGRITY

Doing things well through good judgement, sound ethics, professionalism and consistency

BE FAIR

Being impartial



Linda Robertson
Chair



Barbara Bridger
Chief Executive

Chair and Chief Executive's Report

Tēnā koutou, tēnā koutou, tēnā koutou katoa Central Lakes Trust whānau whānui.

It is with great pride that we present our Annual Report for the 2023/24 financial year, showcasing the performance of Central Lakes Trust (CLT) and the impact our grantees have made in our region.

Wellbeing and housing proved to be the main areas of concern in our community this past year. This could be seen in the amount of grants awarded to organisations within the Community Wellbeing sector - increasing from 78 in the 2022/23 financial year to 91 this year, representing 42% of our total grants awarded.

As our community continues to feel the impact of the current economic climate, we are pleased that we can still support organisations making a difference in our region through our grants.

Over the 2023/24 financial year, CLT approved 179 grants to charitable organisations in our funding region to the value of \$8.76 million. This brings our total grants awarded since our inception in 2000 to \$146.4 million. In the second half of 2024 our grants awarded are set to surpass the \$155 million settled by the Otago Central Electric Power Trust.

Our investment strategy continues to prove effective, even in the current economic environment. CLT achieved a net investment return of 8.8% and a financial surplus for the parent entity of \$32.1m. At the end of 2023, we made changes to our investment adviser arrangements and appointed Mercer as our Investment Adviser.

Pioneer Energy celebrated its 100-year anniversary this year. This company continues to build on the legacy of its founders by being innovative and visionary in everything it does.

Pioneer Energy performed very well this year, recording an Earnings Before Interest, Tax, Depreciation, Amortisation, and Fair value movement of derivatives (EBITDAF) of \$43.4 million - a 21% improvement on its previous financial year.

Our ownership of Pioneer Energy contributed \$8.8 million in dividend payments to CLT throughout the financial year, a return of 7% of the most recent valuation of the company. Pioneer Energy also paid \$4.0 million in interest on Redeemable Preference Shares (RPS), a return of 8% on the value of the RPS.

This year we expanded our director intern programme and appointed Michael Rewi as CLT's inaugural intern in February 2024. Pioneer Energy also welcomed Michelle Mors to their Board as their second intern director. These appointments form part of our intern initiative which aims to develop governance capability in our region. Michael and Michelle will work alongside their Boards as a non-voting members and will receive mentorship during their 18-month tenure.

CLT had a few changes in our staff complement this past year. We farewelled Carryn Colton who was our Communications & Marketing Coordinator for nearly six years, as well as Anna Doyle who had been our Financial Controller since 2019. Martin Smith, our Grants Advisor, retired in December 2023 after being with us for nearly four years. We thank them for their invaluable service to our community and wish them all the best in their future endeavours.

Our heartfelt gratitude goes to our trustees, external committee members, and staff for their invaluable contributions and hard work throughout the year. It is a great privilege working alongside such dedicated and passionate professionals for the betterment of our region. We also thank the team at Pioneer Energy for their unwavering commitment to excellence in sustainable energy generation.

As always, our final thanks go to you, our community. We are continuously humbled and amazed at how many organisations in our region are working tirelessly to make our community a better place. We are honoured to support you in your mahi.

CLT TRUSTEES



Linda Robertson
Chair - CLT Board
APPOINTED TRUSTEE
(2017)



Kathy Dedo
Deputy Chair - CLT Board
ELECTED TRUSTEE
(2019)



Hetty Van Hale
APPOINTED TRUSTEE
(2018)



Tony Lepper, ONZM
ELECTED TRUSTEE
(2019)



Lindsay Breen
Chair - RNC
ELECTED TRUSTEE
(2019)



Kathy Grant
Chair - ARC
APPOINTED TRUSTEE
(2020)



Jim Boulton, CNZM
ELECTED TRUSTEE
(2022)



Trudi Webb
ELECTED TRUSTEE
(2022)



Michael Rewi
INTERN TRUSTEE
(2024)

CLT'S BOARD COMPRISES EIGHT TRUSTEES

The three appointed trustees allow us to recruit for specialist skills and knowledge, and the publicly elected trustees ensures that we are represented by the community we serve. Additionally, our board has appointed an intern trustee to build the governance capacity within our region. The board met formally 13 times during the 2023/24 financial year, and our trustees also represented CLT at community functions and other events in our region.

Our board recognises that there are times when a committee can act more effectively than the full board. To this end, CLT has three established committees to manage certain critical aspects of our organisation. Each of these committees meet in addition to the formal board meetings.

INVESTMENT COMMITTEE (IC)

The IC assists the board with the composition, direction, and strategy of the investment portfolio as well as streamlining the process for evaluating and assessing investment decisions.

REMUNERATION AND NOMINATION COMMITTEE (RNC)

The RNC provides advice, assurance, and observations to the board relating to the effectiveness and adequacy of CLT's recruitment, remuneration, benefits, and wellness processes and activities.

AUDIT AND RISK COMMITTEE (ARC)

The ARC provides advice, assurance, and observations to the board relating to the effectiveness and adequacy of internal controls and risk management systems, processes, and activities.

TRUSTEE DISCLOSURE

	MEETINGS ATTENDED				
	CLT Board	Audit and Risk Committee	Remuneration and Nomination Committee	Investment Committee	Remuneration
Trustees					
Linda Robertson	13 13	5 5	4 4	10 10	\$55,000
Lindsay Breen	12 13	-	4 4	-	\$29,250
Kathy Dedo	12 13	5 5	-	-	\$25,750
Tony Lepper	13 13	-	4 4	-	\$25,750
Trudi Webb	12 13	-	-	-	\$22,250
Jim Boulton	10 13	-	-	4 6	\$24,291
Kathy Grant	13 13	5 5	-	-	\$36,750*
Hetty Van Hale	12 13	-	-	10 10	\$25,750
External members of Investment Committee					
Mark Taylor	-	-	-	4 4	\$11,250*
Simon Flood - Chair from August 2023	-	-	-	9 10	\$11,250
					\$265,101

*Includes remuneration for service on Southern Cross Central Lakes Hospital board.



OUR STAFF

WE HAVE A TEAM OF EIGHT LOCAL PROFESSIONALS WHO LOOK AFTER THE DAY-TO-DAY WORKINGS OF CLT. THEY WORK CLOSELY WITH GRANTEEES AND OTHER STAKEHOLDERS TO FACILITATE FUNDING IN LINE WITH CLT'S VISION AND MISSION.

BACK ROW, FROM LEFT TO RIGHT:

Jenn McGregor
Finance & Operations Coordinator

Denise Russell
Governance & Policy Coordinator

Katie Lindsay
Grants Advisor & Information Security Officer

Marion Low
Communications & Marketing Coordinator

Gillian White
Grants Advisor

FRONT ROW, FROM LEFT TO RIGHT:

Jennifer Gillan
Grants and Office Administrator

Barbara Bridger
Chief Executive

Mat Begg
Grants Manager

GRANT FUNDING PRINCIPLES



Enabling People

Strengthening communities to be responsive, engaged and resilient.

Enhancing Opportunities

Enriching communities, enhancing community assets and facilities, creating community cohesion.

Enduring Environment

Stewardship of the history and environment of the region.

Southern Lakes
Sanctuary
volunteers

GRANTING IN THE COMMUNITY

CLT GRANTS TO CHARITABLE ORGANISATIONS IN OUR REGION TO SUPPORT AND STRENGTHEN PROJECTS AND PROGRAMMES WITHIN THESE SECTORS:

LIFELONG LEARNING

Initiatives that facilitate improved learning outcomes for people in our region by adding value to the sector, with a focus on community development and lifelong learning.

COMMUNITY WELLBEING

Programmes and organisations that address social problems or improve health outcomes for the people in our region.

COMMUNITY RECREATION

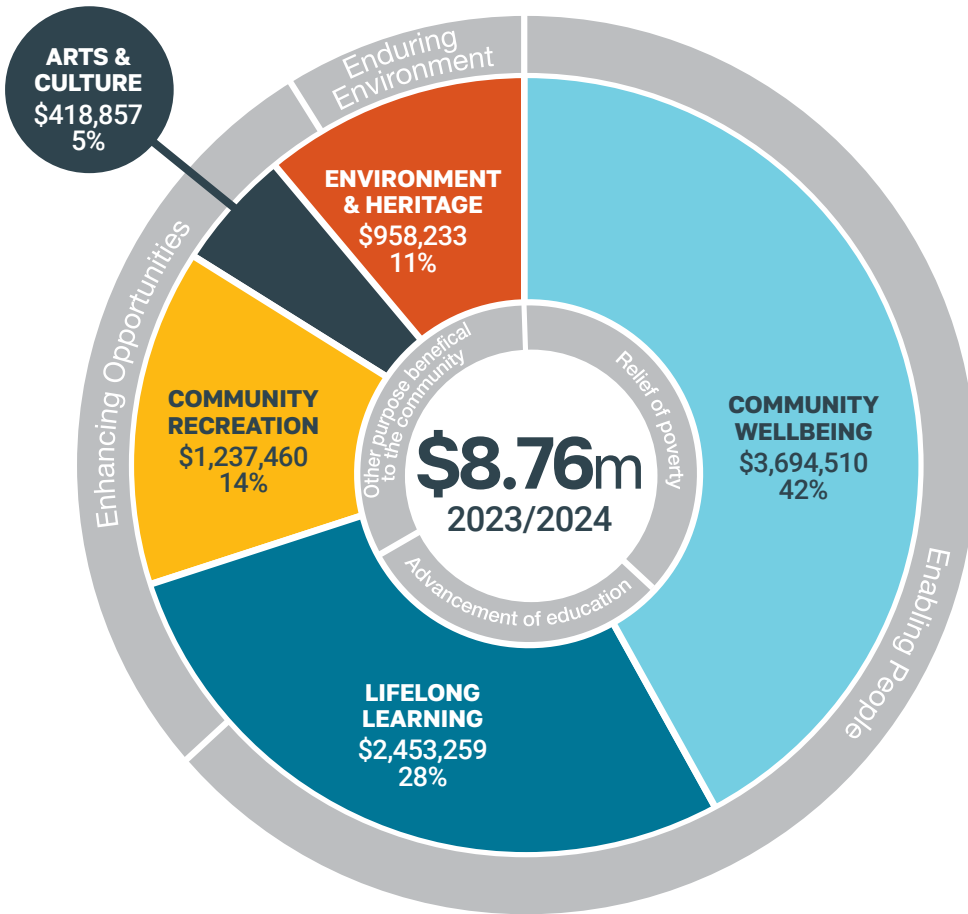
Programmes and organisations that focus on community participation and engagement in recreation.

ARTS & CULTURE

Creative projects and organisations that aim to foster access to, engagement with, and experience in, the arts and celebrate the different cultures in our region.

ENVIRONMENT & HERITAGE

Projects and organisations that preserve and promote the physical and cultural heritage of our region and that protect and enhance the environment in which we live.



NUMBER OF GRANTS APPROVED	23/24	23/22	21/22	20/21
LIFELONG LEARNING	34	36	29	35
COMMUNITY WELLBEING	91	78	82	81
COMMUNITY RECREATION	16	18	22	22
ARTS & CULTURE	24	20	20	16
ENVIRONMENT & HERITAGE	14	17	12	9
	179	169	165	163

We have made every effort to use te reo Māori respectfully and correctly wherever possible within this document. There might be some variations on spelling due to external factors.

LIFELONG LEARNING



CLT provides funding to support projects and programmes aimed at enhancing learning outcomes for individuals across our region. With a dedicated focus on adding value to the education sector, we recognise the significance of investing in initiatives that foster community development and lifelong learning.

This commitment extends to a diverse range of projects and programmes designed to empower individuals of all ages and backgrounds. Our funding supports youth programmes across the region, projects driven by early learning centres, schools and tertiary institutions, as well as community education groups.

Flox with the mural at Alexandra Primary

ALEXANDRA PRIMARY SCHOOL MURAL FOR SCHOOL REDEVELOPMENT

During their recent redevelopment, Alexandra Primary School saw an opportunity to teach their students about some of the local history while creating an enduring piece of art the whole community could enjoy.

This project started during the junior school's inquiry project "who came before us" which coincided with the Ministry of Education releasing a learning resource called "Painting Stories". Inspired by how Auckland mural artist Flox, real name Hayley King, captured Roxburgh's history, the school sought funding to engage the artist to capture what makes Alexandra unique.

The students were given the opportunity to contribute their ideas for what should be on the mural and the piece – which connects the old part of the school to the new part – now features a karearea, a moko moko (Otago skink), cherries, apricots, spring blossoms, and the Mata-Au (Clutha) River. Funding from CLT covered the artist's fee in creating this public work of art.

WHAKATIPU YOUTH TRUST OPERATIONAL GRANT

Whakatipu Youth Trust, works closely with young people aged 10-24 to cultivate essential skills, self-worth, wellbeing, resilience, and provide the support needed to achieve their fullest potential. Central to their mahi is the creation of safe environments, trusted relationships, and diverse opportunities that empower youth to lead purposeful and meaningful lives.

Supported by their dedicated team, trustees, and a wide community of supporters and volunteers, Whakatipu Youth Trust offers a wide range of programmes to the youth of the region. These include initiatives such as Study Club, Wahine Warriors, and school holiday activities. They also

host drop-in sessions at The Loft where youth can go along to hang out for free.

Whakatipu Youth Trust offers mild to moderate mental health services, including counselling and social work. Their youth workers are active in all the schools within the Whakatipu region, attending during school lunch breaks and school events. They also provide activities, join in on games or just chill with the youth and catch up on what they have been up to.

Funding from CLT supports the ongoing operation of youth workers and the associated programmes delivered by Whakatipu Youth Trust.

THE BOYS BRIGADE IN NEW ZEALAND ICONZ EDGE PROGRAMME

The ICONZ Edge programme, provided by the Boys Brigade, offers sessions designed for boys that incorporate action and adventure, challenge, managed risk, skill training, and value development.

A typical programme includes team games and challenges, various sports, badges for skills like bushcraft and carpentry, team talks, community service activities, and visits to public service providers such as Search & Rescue, Police, and the Fire Service. Each unit reflects the unique skill set of its volunteer leaders, offering a distinct flavour to its activities.

ICONZ Edge is part of the Education Outside the Classroom initiative at primary and intermediate schools, targeting boys chosen by the school to help with their social development and learning. The Boys Brigade's vision statement is "Men mentoring boys, growing Kiwi boys into Kiwi icons," with a mission to see boys develop into men who are constructive, caring, resilient, innovative young leaders and contributing citizens. CLT provided an operational grant to support this programme in our region.



ABOVE:
Achieving new heights with
the Whakatipu Youth Trust

BELOW:
Learning life skills with
The Boys Brigade.
Photo:
Warwick Tomlinson





Realising potential with Mana Rangatahi

TRANSITION TO WORK TRUST MANA RANGATAHI PROGRAMME

Mana Rangatahi is a joint project between Innov8HQ and Transition to Work Trust (TWT) that has been operating in Dunedin since 2020. This leadership programme is designed to connect, resource, and empower young people in the workforce and mainly focuses on disengaged youth aged 18-24, particularly targeting Māori, Pasifika, migrants, and the disabled.

The programme has four focus areas: High-skilled Employment - preparing participants for demanding roles, Entrepreneurial Success - giving youth the necessary tools to launch and run successful businesses, Continuous Education - encouraging ongoing specialisation and learning, and Leadership and Governance - preparing participants for impactful community and organisations leadership roles.

With the support of CLT, the Mana Rangatahi programme was launched in Central Otago. This funding is crucial for making the successful Mana Rangatahi programme available to the youth in this region, encouraging and inspiring them to identify and achieve their potential.

TE KURA O TAKE KĀRARA COMMUNITY SHARED OUTDOOR SPACES

Wānaka's rapidly growing population underscores the need for collaboration and shared spaces that benefit all ages, demographics, and abilities to counter social isolation and providing ample opportunities for community engagement.

When Te Kura O Take Kārara, Wānaka's newest school, opened at the beginning of 2020 it quickly became a hub for parents and children to gather after school, on weekends, and during holidays. With this in mind, the school set out to create an outdoor recreational space that would not only benefit children during school hours but also serve the wider community.

The school is set to have an early childhood centre next door, which will share the majority of the school's outdoor play area and equipment. With the play area and pump track being close to the Recreation Centre and playing fields, it is also

easily accessible for use by younger children while their older siblings participate in sports.

CLT provided funding towards the costs associated with delivery of an asphalt bike track, mini trail playground equipment, wave and straight monkey bars, play log area, timber steppers and balance boards, and astroturf lawn components.

PIVOTAL POINT OPERATIONAL GRANT

With one in five children being neurodivergent, Pivotal Point Charitable Trust is dedicated to empowering whānau by providing essential support to tamariki with neurodiversity and processing disorders in the Whakatipu region. Their mission is to ensure every child has equal access to the resources needed to unlock their full potential.

Neurodiversity is an umbrella term encompassing specific learning differences such as dyslexia, dyscalculia, dysgraphia, and dyspraxia, as well as attention deficit hyperactivity disorder (ADHD), autism, and tic disorders like Tourette's. Neurodivergent people have brains that are wired differently from neurotypical individuals, and are more likely to underachieve academically, face mental health challenges, and be overrepresented in prison statistics.

Pivotal Point is working towards changing this by identifying and supporting neurodiverse tamariki and their families through a holistic programme in the Whakatipu region.

This programme includes:

- Professional development programme for educators
- In-school screening programme to help identify tamariki with neurodivergent tendencies
- Directing whānau to the appropriate organisations for evaluation, diagnosis and support
- Support sessions for whānau of neurodivergent tamariki
- Financial support for those families where costs of therapy are a challenge

CLT provided funding towards their operations.



Testing out the new playground. Photo: Lisa Bailey

COMMUNITY WELLBEING



Installing the VHF repeater.
Photo: Ian Brown

Our Community Wellbeing grants support and strengthen community organisations addressing social problems or improving health outcomes for the people in our region. This support extends to a diverse range of initiatives, including those focused on social services, emergency response, and other wellbeing activities such as care facilities for vulnerable members of our community. By providing resources and support to these vital organisations, we aim to bolster their capacity to address a wide range of societal challenges and promote overall wellbeing within our community.

UPPER CLUTHA RADIO TELEPHONE ASSOCIATION LAKE HĀWEA VHF REPEATER UNIT

Reliable radio coverage is crucial in rural areas to ensure safety and effective communication. Upper Clutha Radio Telephone Association received a grant from CLT to cover the costs associated with installing VHF repeater units and associated equipment at Mt. Roy and Rocky Point.

The VHF radio network provided by this facility is utilised by local user groups including SAR, Coastguard, schools, private lake users, private companies, commercial boating operators, and remote rural families. In the event of a civil emergency, this network could be the only operational communication facility covering the Upper Clutha basin. The expanded coverage will enhance safety for users of the Upper Clutha waterways and the surrounding remote rural areas, ensuring reliable communication in areas that previously experienced blind spots.

HATO HONE ST JOHN AMBULANCE FOR ALEXANDRA

As part of New Zealand's community health care solution, Hato Hone St John provides emergency ambulance services to the Central Lakes Region 24/7, 365 days a year.

St John is updating 15 of their ambulances in their fleet serving the South Island to better suit New Zealand conditions, increase efficiency, and improve patient care. To ensure efficient service, St John swap out its ambulances after 400,000km or every 8 years. Ambulances typically spend their first 2 years in one location before getting rotated into a smaller station for the duration of their life cycle.

CLT provided funding for a new frontline emergency ambulance to serve the region. With its home base in Alexandra, this new vehicle will serve approximately 50,000 people from Wānaka to Roxburgh. This new vehicle forms part of Hato Hone St John's capability and capacity building strategy to ensure that Cromwell could serve as a central hub should a large disaster such as a magnitude 8 Alpine Fault earthquake.

SARDA NZ RESCUE EQUIPMENT

Search & Rescue Avalanche Dogs Incorporated (SARDA) trains, certifies, and deploys avalanche search dog teams to provide a professional emergency service. As a volunteer organisation, SARDA is the only avalanche search and rescue dog organisation in New Zealand recognised by the NZ Police and New Zealand Search and Rescue (NZSAR) to deliver this critical service. All members are volunteers, with no paid staff, and their services are directed by the NZ Police and NZSAR. The dog teams undergo joint certification by SARDA and the NZ Police, with continuous training throughout the year and annual assessments in September.

Operational teams are on call 24/7, year-round, with rapid response capability during the high-risk winter snow season. Avalanches can occur at any time in

New Zealand, so SARDA's teams remain vigilant and ready to respond accordingly.

There are seven teams based in Wānaka and two in Queenstown, with many handlers working at local ski fields. Statistics highlight the importance of speed in avalanche rescues, with survival rates between 50% and 90% if victims are located within 10 to 20 minutes, dropping to around 20% after 30 minutes. Search dogs can cover a one-hectare area in approximately 30 minutes, a task that would take 20 searchers on foot four hours. Having these teams stationed at alpine resorts significantly enhances the chances of saving lives.

Due to the challenging nature of the environment in which the handlers and dogs operate, they require specialist training and equipment. CLT provided funding to SARDA to purchase the necessary equipment to ensure they can continue their operations safely and efficiently.

SPORT OTAGO OPERATIONAL GRANT

Sport Otago has been getting people active since 1983. They aim to incorporate movement into every Otago resident's daily life through a range of programmes that promotes physical activity, wellbeing and inclusivity in the community.

Sport Otago's mahi falls into four categories:

- Sport - supporting sport in the community by building capability and capacity, developing coaches in the region, and providing opportunities for players to have a go.
- Recreation - promoting physical activities that are less structured and competitive.
- Play - giving tamariki the time, space and permission to play.
- Healthy Lifestyles - providing free change intervention programmes to enhance physical, mental and social wellbeing of individuals or whānau.

Through these programmes, Sport Otago supports people of all ages and stages in their wellbeing.

CLT has been supporting Sport Otago with funding since 2009.

ADL OPERATIONAL GRANT

For over 30 years, ADL – formerly known as Adventure Development Limited – has been a driving force in bringing positive change to the lives of young people in the CLT region. ADL's commitment to adventure therapy, utilising outdoor activities to support young people facing various challenges, has been a cornerstone of its success.

The need for their services has been steadily growing, with referrals into the Central Lakes Team increasing by 50% from 2019 to 2023.

To meet this growing demand, the number of staff in the CLT region has grown significantly over the past few years, from a team of three in 2018 to a dedicated team of 11 professionals today. ADL has recently invested in key roles, including a Journey and Activities Leader and Outdoor Activities Specialist, to further increase their capacity.

ADL's impact is truly transformative, underscored by the overwhelmingly positive feedback they receive. A notable 89% of clients report a direct improvement in their wellbeing, attesting to the tangible positive change facilitated by ADL. Furthermore, an impressive 97% of whānau rate ADL's services as good to excellent. This high praise highlights the organisation's effectiveness in making a meaningful and substantial difference in the lives of young people and their broader support networks. CLT supports ADL with operational funding to help sustain their services in the region.

CENTRAL OTAGO FRIENDSHIP NETWORK OPERATIONAL GRANT

The Central Otago Friendship Network (COFN) enriches lives by creating a supportive network within the wider community. By enhancing and developing social skills and confidence, COFN fosters a sense of belonging and support.

Supported by operational funding from CLT, COFN offers a variety of programmes to facilitate social interaction and provide companionship. These include coffee and chat support groups that meet in the community, one-on-one sessions and group meetings for the elderly, as well as special needs classes at Dunstan High School and Cromwell College. A group also operates from Roxburgh Area School.

In addition to providing social opportunities for people who are at risk of becoming socially isolated, COFN also offers practical help such as helping participants overcome travel barriers, offering advice on accessing other groups and resources, and providing training in areas such as anger management, appropriate attire, safety issues, and conversation skills. This broadens social and communication skills, facilitating integration into everyday life.

ALZHEIMERS SOCIETY OTAGO OPERATIONAL GRANT

Alzheimers Society Otago (ASO) is dedicated to supporting people with dementia and their care partners, helping them to live well within the community. Their mission extends beyond individual support, striving to educate and raise awareness in the wider community to foster a dementia-friendly and inclusive environment.

ASO's core services focus on enabling individuals with dementia to remain at home and actively engage with their community for as long as possible. Currently, ASO supports 187 individuals diagnosed with dementia within the CLT region, extending assistance to 748 carers and family members.

The support provided by ASO includes helping individuals and carers receive a diagnosis, assisting with challenging paperwork, offering information and education to understand the condition and its progression, and providing a listening ear to discuss coping strategies. This comprehensive support system ensures that both those with dementia and their carers are well-equipped to manage the journey ahead. CLT is proud to support them with operational funding.



ABOVE:
The new Hato Hone St John ambulance for Alexandra.
Photo: Bridg Janse

BELOW:
Happy finishers at a Sport Otago colour run.
Photo: Jo Knight



ABOVE:
One of SARDA's rescue dogs.
Photo: Jane Dunn

LEFT:
Fostering wellbeing through outdoor adventures with ADL

RIGHT:
Connecting over crafts with COFN





COMMUNITY RECREATION

Our Community Recreation sector grants serve as a cornerstone for fostering inclusive leisure opportunities within the Central Lakes community. With a focus on multi-purpose facilities that offer broad accessibility, such as halls, swimming pools, and bike parks, CLT aims to ensure that residents from all walks of life have access to recreational spaces that promote physical activity, social interaction, and overall wellbeing. Additionally, CLT directs funding towards projects that cater to diverse recreational interests, ranging from sports and fitness activities to cultural events and outdoor adventures, thereby enriching the recreational landscape and enhancing the quality residents' quality of life.

LEFT: Smooth sailing at the Wanaka Yacht Club

WANAKA YACHT CLUB LEARN TO SAIL BOATS

The Wanaka Yacht Club is dedicated to encouraging participation in sailing for individuals of all ages and abilities. The club's mission is to promote the health and wellbeing benefits of sailing, both mental and physical, while educating participants in safe sailing practices and water safety.

The club's activities include "Learn to Sail" classes, which run five days a week during the fourth and first school terms each year. This programme, facilitated by one paid instructor and numerous volunteers, is the primary focus and is always oversubscribed due to the limited number of yachts and rescue craft available. To address this demand, CLT has provided funding for two additional sailing boats, significantly enhancing the club's capacity to accommodate more participants.

The Wanaka Yacht Club also offers "Have-a-Go" days, free and open to the public, allowing individuals to experience sailing firsthand. Additionally, they run twilight races on Thursdays for members and visitors, providing a natural progression for those who have completed the Learn to Sail programme. During the summer, the club hosts sailing camps to expose participants to different types of sailing, further broadening their experience and skills.

Collaboration is a cornerstone of the club's operations. They work closely with Mount Aspiring College, Kahu Youth Trust, Wanaka Scouts, Community Networks, and other community groups, all of whom benefit from the expanded opportunities provided by the additional sailing boats. These collaborations help the club reach a wider audience and foster a supportive and engaged sailing community.

QUEENSTOWN TRAILS TRUST QUEENSTOWN TRAIL REALIGNMENT STAGE 1

Queenstown Trails Trust (QTT) is dedicated to creating, nurturing, and maintaining a world-class recreational trail network that connects communities, enhances health and wellbeing, and attracts visitors from around the globe. Their mission is to provide a sustainable, integrated, and highly regarded trail system that benefits all Whakatipu residents and enriches the quality of life in the region.

QTT are undertaking the realignment of the trail from Frankton to Arrowtown via Arthurs Point to enable safe walking and cycling between Arrowtown, Arthurs Point, and Frankton. The trail realignment will not only provide safe commuting options but also reduce road congestion and enhance safety for children and adults alike. This project is viewed as the first stage, with the second stage linking Frankton to Lake Hayes and onto the Gibbston Valley along the true right side of the Kawarau River.

The trail network already experiences 250,000 trips annually, contributing approximately \$50 million to regional GDP and supporting around 670 full-time jobs. The strategic funding support from CLT is crucial in bringing this vision to fruition.

SNOW SPORTS NZ CHARITABLE TRUST CENTRAL LAKES ADAPTIVE PROGRAMMES 2023

Snow Sports NZ Charitable Trust (SSNZCT) is the national sporting organisation dedicated to the growth and success of competitive snow sports, including adaptive snow sports, alpine ski racing, cross country skiing, freeskiing, and snowboarding. Each year they deliver the Snow Sports Central Lakes Adaptive Programme at the Remarkables, Cardrona, and Coronet Peak ski fields.

The programme focuses on adapting equipment, providing lessons, and ensuring accessible support systems for individuals with physical, sensory, and cognitive impairments. This support ranges from offering security to first-time skiers on learner slopes to enabling advanced riders to explore more challenging terrain.

The programme relies on trained adaptive instructors, on-snow buddy volunteers, specialist rental equipment, and trained staff to deliver its services. CLT has been supporting the delivery of this programme since 2019.

SSNZ continues to collaborate with organisations such as Halberg, regional Parafeds, and the Blind and Deaf Foundations to develop nationwide on-snow programmes. The recent successes of New Zealand's Paralympians have inspired many people with disabilities to try skiing and snowboarding, and SSNZ is committed to building on this momentum.



QTT enhancing safety for cyclists and pedestrians.
Photo: Geoff Marks



Making snow sport accessible for all with SSNZCT



Getting stuck in at the Queenstown Bike Festival.
Photo: Paul Foley



**QTMBC
QUEENSTOWN BIKE FESTIVAL**

More than 1,000 riders got into gear at the second Queenstown Bike Festival, partially funded by CLT. This fun community event spanned over 10 days and had something for every level of rider.

The festival's lineup included coaching sessions such as cornering clinics, kids' progression sessions, and even a women's jump clinic. While the emerging riders were brushing up on their skills, the pros competed in various races, including the Coro1200 and the McGazza Chainless race. Not to be forgotten, those who prefer to leave the pedalling to others could enter the photography competition or enjoy the vibe at the chill down sessions.

**CODC - PROPERTY
REDEVELOPMENT CROMWELL
MEMORIAL HALL**

The Cromwell community is embarking on an exciting journey towards the future with the development of the new Cromwell Memorial Hall and Events Centre. This ambitious project reflects the community's commitment to investing in a

versatile asset that will serve the needs of both present and future generations.

With a deep respect for its memorial status, the new facility will honour the legacy of the past while embracing modernity. It will be designed as a contemporary space where all members of the community and visitors can feel welcome and engaged.

The plans for the Cromwell Memorial Hall and Events Centre envision a multi-use facility that caters to a wide range of needs and interests. In addition to a state-of-the-art auditorium for performances and events, the plans include a café for social gatherings, a museum showcasing local history, a cinema, and more. The facility will also boast meeting rooms and public spaces that will provide opportunities for collaboration, learning, and connection.

This development is being realised through the collaborative efforts of the Central Otago District Council, with funding support from CLT. The Cromwell Memorial Hall and Events Centre will serve as a hub of activity, benefiting the entire Central Otago region by attracting visitors, fostering community engagement, and providing a versatile space for a wide range of cultural, educational, and social events.

**WHAKATIPU ROWING CLUB
CLUBHOUSE REDEVELOPMENT PROJECT**

Rowing in the Queenstown area can be traced back all the way to 1908 when the first regatta was held. Whakatipu Rowing Club has been proudly promoting the sport since 1958 when the club was formed.

In 1985, the club shifted from the bath house on Queenstown Bay to their shed at Lake Hayes. While the shed has served them well as a clubhouse, the club recognised the need to upgrade its facilities and approached CLT for funding.

The additions will enhance the club's ability to deliver personal development skills in a local, accessible setting and significantly boost the club's capacity to offer a united community space for healthy outdoor recreation.

Whakatipu Rowing Club is dedicated to fostering personal and community growth through the sport of rowing. The club provides training and equipment to facilitate rowing on Lake Hayes, where up to 50 rowers can be seen daily during the rowing season from September to April. In doing so, they promote values such as teamwork, commitment, respect, and confidence alongside the many health and wellness benefits of rowing.

ARTS & CULTURE

The arts are not only a means of individual expression but also a catalyst for building stronger social connections and enriching community life. Through our support for a diverse range of projects, including large local productions that provide opportunities for wide community participation, education programmes, and workshops, we actively cultivate environments that celebrate the unique identities and traditions within our community.

From art classes and music workshops to storytelling sessions and dance performances, these initiatives foster a sense of belonging and inclusion, while also promoting lifelong learning and personal growth within our community.



Woman
of Word
RNZB

SOUTHERN LAKES ARTS FESTIVAL TRUST FESTIVAL OF COLOUR 2023 AND ASPIRING CONVERSATIONS 2024

The Southern Lakes Arts Festival Trust is the creative force behind the Festival of Colour, a seven-day celebration of world-class arts, ideas, and education in the region. Supported by two year-round staff members, 28 short-term contract workers, and over 80 volunteers, the festival is a testament to community collaboration and dedication.

The Festival of Colour is designed to be accessible to everyone, ensuring that all members of the community can experience and benefit from the arts. By offering a broad range of free public events and integrating community and school programmes, the festival fosters a deeper connection and appreciation for the arts within the region.

This year CLT provided funding to support the costs associated with community-focused activities, including the community soapbox, school sessions, community wellbeing initiatives, and environment and sustainability sessions as part of the Aspiring Conversations series. Aspiring Conversations gives the community time to gather, connect, and kōrero, contributing strongly to a sense of identity and community cohesion.

SHOWBIZ QUEENSTOWN SPAMALOT THE MUSICAL

Showbiz Queenstown has a proud legacy of delivering top-quality performances to the Whakatipu area and beyond spanning over 40 years.

Showbiz Queenstown thrives on the passion of local performers and the generosity of sponsors. Each year, their productions captivate audiences and contribute significantly to the local arts scene. By working with talent of all ages and experience levels, they ensure that the arts continue to flourish in the region.

The organisation's commitment to nurturing talent is evident in its strong connections with local schools and creative groups. This collaborative spirit fosters a supportive arts community where cooperation is valued over competition.

In 2024, with support from CLT, they successfully staged *Spamalot*, a musical comedy based on the classic film *Monty Python and the Holy Grail*. Running from 16 May to 25 May 2024, this production delighted audiences with its whimsical take on King Arthur's legendary quest.

ROYAL NEW ZEALAND PIPE BANDS ASSOCIATION OTAGO CENTRE QUEENSTOWN PIPE BAND CHAMPIONSHIPS

The Royal New Zealand Pipe Bands Association (RNZPBA) Otago Centre is dedicated to protecting and growing the rich heritage of pipe band music. Their mission is to provide education and competitive opportunities for people of all genders and ethnic backgrounds, ensuring the continuation and appreciation of this unique art form.

Recently, the RNZPBA Otago Centre hosted the inaugural Queenstown Pipe Band Competitions which CLT supported through funding. Despite a heavy downpour on the first day, the competition proceeded smoothly thanks to indoor contingencies.

RNZPBA Otago Centre is particularly focused on youth programmes, recognising the immense benefits they offer. These programmes help develop self-esteem, confidence, discipline, a sense of purpose, and a strong work ethic among young participants. They also foster cultural appreciation and provide a lifelong network of support and encouragement. This focus was evident at the Queenstown competition, where a significant number of solo event entries were from young people, and several youth bands participated.



ABOVE:
"Always look on the
bright side of life!"
with Showbiz



BELOW:
Fostering cultural
appreciation and
community with
RNZPBA



ABOVE:
Kapa Haka
performers at
Central Lakes Polyfest

BELOW:
Performing with the
Central Otago
Regional Choir

"The Eyes Have It"
at WoolOn.
Photo: Lisa Hill



MĪHARO MURIHIKU TRUST CENTRAL LAKES POLYFEST 2023

Miharo Murihiku Trust, primarily based in Murihiku/Southland, is dedicated to promoting arts and culture through events and workshops. Among their flagship initiatives is the annual Polyfest in Invercargill that attracts groups from all over the South Island.

Recognising the increased interest in cultural performing arts, Mīharo established the Central Lakes Polyfest in 2018. With each passing year, the engagement in the region has seen exponential growth, reinforcing Mīharo Murihiku Trust's commitment to bringing successful programmes from Murihiku to the Central Lakes region.

The 2023 event, held on 18 to 19 October 2023 in the Queenstown Events Centre saw approximately 1,300 tamariki and rangatahi from across Central Lakes and Central Otago participating over two days.

A notable addition to this year's Polyfest was the involvement of a local Tongan community group, showcasing their cultural performances for the first time. This year also marked the initiation of the Whakamanahia te Rangatahi-youth mentoring programme for the region. Through a tuakana-teina model of support, selected participants engaged with rangatahi from Mt Aspiring College, showcasing volunteer work and fostering connections for future collaboration.

The event provided a holistic experience of Pasifika worldviews, te Ao Māori, te reo Māori, and tikanga. CLT played a pivotal role by providing funding towards sound and lighting costs.

CENTRAL OTAGO REGIONAL CHOIR CONCERT SERIES 2023

Central Otago Regional Choir (CORC) is dedicated to the pursuit of excellence in choral music, enriching the cultural landscape of Central Otago through their performances. With a mission to practice and present choral music of exceptional quality, CORC brings together vocal and instrumental musicians from across Otago to create memorable and inspiring musical experiences.

The cornerstone of CORC's annual calendar are their spring and autumn concert series, comprising three public performances each. These series offer

audiences the opportunity to immerse themselves in the beauty of choral music, performed to the highest possible standard by CORC's talented members. These concerts not only showcase the choir's dedication and skill but also provide a platform for the community to come together and experience the joy of live music.

In line with their commitment to supporting the arts community in Otago, CORC extends performance opportunities to vocal and instrumental musicians from throughout the region. By fostering collaboration and inclusivity, CORC enriches the musical landscape of Central Otago and beyond.

Funding from CLT was directed towards the promotion of the concert series, venue hire, piano tuning, and acquiring music scores.

WOOLON CREATIVE AND FASHION SOCIETY WOOLON 2023

WoolOn Creative and Fashion Society (WoolOn) was formed in the 1980s with a mission to promote the use of wool in fashion design and crafts, educate the community on wool and its uses, and support local growers and producers.

The annual WoolOn Creative Fashion Event has evolved from a small show on a limited budget into a fashion extravaganza, showcasing the creativity and versatility of wool. From its humble beginnings, WoolOn has grown into a regular feature on the Central Otago events calendar, attracting entries from all over New Zealand and overseas. The event celebrates the connection between fibre, art, and glamour, with bold cutting-edge designs created from a beautiful raw product. Central Otago's picturesque landscape serves as the perfect backdrop to inspire designers' fashion creations.

WoolOn emphasises that "From Nature Comes Fashion", highlighting the natural origins of wool and its importance not only to Central Otago but also to New Zealand as a whole. The event, which debuted in 2004, requires all garments to be made of at least 75% wool and features nine categories, showcasing the diversity and innovation within the wool fashion industry. With the support of CLT, WoolOn continues to grow and thrive, connecting communities and celebrating the artistry of wool fashion.

ENVIRONMENT AND HERITAGE



Getting up close
and personal.
Photo:
Lake County
A&P Society

The physical and cultural heritage of our region is paramount to maintaining a strong sense of identity and connection to our past within the Central Lakes community. By investing in initiatives that celebrate local traditions, historical landmarks, and diverse cultures, we honour the rich tapestry of our community's heritage. From heritage preservation projects to cultural festivals and educational programmes, CLT's funding ensures that our region's unique history and traditions are preserved and shared with present and future generations.

We also recognise the importance of protecting and enhancing our environment as integral to the wellbeing of our community. Through funding directed towards environmental conservation initiatives, sustainable development projects, and educational programmes, CLT actively contributes to the preservation of our natural resources and ecosystems.

LAKE COUNTY A&P SOCIETY LAKE HAYES A&P SHOW 2024

The Lake County A&P Society (LCAPS) has a longstanding commitment to promoting excellence in agriculture and pastoral activities through its shows and exhibitions. Since its establishment in 1904, the annual show at Lake Hayes has become a cherished tradition, bringing together rural and urban communities to celebrate the region's rich heritage and agricultural achievements.

The core objectives of LCAPS reflect its historical roots in promoting agricultural excellence. Over the years, the event has evolved into more than just a showcase for farming and pastoral activities. It has become a vital forum for fostering connections between rural and urban residents, highlighting the changing landscape and land

use patterns, including the transition from sheep farming to vineyards, fruit orchards, and lifestyle properties. This evolution has contributed to strengthening community engagement and resilience, particularly in remote areas.

The 108th show was held on 13 January 2024 and attracted around 5,000 people. Funding from CLT supported essential aspects of the event, including shade sails, traffic management, and toilet rental, ensuring a successful and enjoyable experience for all attendees.

SOUTHERN LAKES SANCTUARY TRUST OPERATIONAL GRANT

Southern Lakes Sanctuary Trust (SLS) assists 100 groups and over 1,000 volunteers working towards

the eradication of predators in their region. By controlling the predators, at-risk or threatened bird, lizard, and bat species are protected.

SLS supplies traps and baits, undertakes surveys and consent condition work, manages health and safety requirements, and handles the application for consents. They also develop trapping programmes to reduce the strain on volunteers, allowing them to focus on the hands-on aspect of predator removal.

Since 2022, they have removed 35,555 predators and manage a suppression area of 163,000 hectares, which is 30,000 hectares larger than originally predicted. The goal is to increase this to 185,000 hectares by March 2025. The project has expanded from 6,400 to 10,835 traps and aims to reach 12,000 traps by mid-2025. CLT provided funding to support their operational costs.





LEFT: Rosie Turnbull shares her memories.
Photo: Marion Low

RIGHT: The Herc delighting crowds at Warbirds over Wānaka.
Photo: Geoff Marks



Making a difference - one rescued veggie at a time!

CENTRAL OTAGO HERITAGE TRUST ORAL HISTORY PROJECT

The Central Otago Heritage Trust (COHT) recognises the value of preserving Central Otago’s history. In 2019, COHT identified an opportunity to create a significant heritage collection through the development of an oral history resource. Oral history involves recording, preserving, and interpreting historical information based on the personal experiences and opinions of individuals, providing new perspectives on documented events and creating records where none previously existed.

Oral history plays a vital role in this process by giving voice to individuals and groups often marginalised by conventional histories, including women, the LGBTQ+ community, ethnic minorities, and low-income earners.

COHT’s oral history initiative, supported by CLT, captures these diverse narratives, ensuring that the rich and varied history of Central Otago is preserved and accessible for future generations. Through this project, COHT seeks to honour and celebrate the personal stories that have shaped the district, fostering a deeper appreciation of its heritage amidst ongoing development and change.

KIWIHARVEST OPERATIONAL GRANT

It is not often that a project addresses two major issues at once, but that is exactly what KiwiHarvest is doing. This charitable organisation reduces waste by “rescuing” surplus food, and then channels it to those in need of food support.

Established in 2020, KiwiHarvest Queenstown operates predominantly in the Whakatipu region, but also in Cromwell, Alexandra, and Wānaka. Working with a wide network of community organisations, KiwiHarvest provides around 6,800 meals per week in the CLT region. These groups serve a wide range of community members, particularly those experiencing financial hardship, including children, youth, families, the disabled, and the elderly, as well as those who are impoverished, destitute, or homeless.

KiwiHarvest focuses on rescuing nutritious fresh fruit, vegetables, and ready meals – foods often missing from the diets of vulnerable community members. With 100% of donated food going back into the community, KiwiHarvest ensures that those in need receive essential nourishment, enhancing the health and wellbeing of the community. CLT proudly supports this organisation with operational funding.

WARBIRDS OVER WANAKA AIRSHOWS 2024

Warbirds Over Wanaka Airshows (WOW) is dedicated to educating the public through the celebration of aviation, both past and present. Their biennial event, Warbirds Over Wanaka International Airshow, was first held in 1988. Following an unplanned hiatus of six years, the 2024 event attracted over 60,000 enthusiasts for an aeronautical celebration.

The 2024 show, supported by CLT, was enhanced with exhibitors showcasing the sustainable future of flight, technology, and aerospace. Attendees were wowed by two days each filled with six hours of non-stop, world-class flying. Some of the highlights included the exhilarating F-16 Fighting Falcons, the iconic Mosquito, and a Yak-52 12-ship aerobatic team.

Proceeds from the events go to charitable causes including donations to Hato Hone St John, Volunteer Fire Service, and WAI Wānaka. The event also supports other groups by allowing them to run activities for their own fundraising. Additionally, WOW funds annual Warbird Flying Scholarships, providing aspiring pilots with opportunities to fly vintage aircraft.



SOCIAL IMPACT INVESTMENTS

CLT is continuously on the lookout for social impact investments that provide significant benefits to our wider community. Through a relationship-focused approach, CLT engages in discussions with various groups to explore these opportunities. A social impact investment from CLT is designed to have a long-term impact on the community, often spanning several years. These investments leverage additional funding or partnerships, benefit a large segment of the population or region, and unlock potential within organisations.

LEFT: Assisted ownership homes at Hikuwai, Wānaka.
Photo: Breen Homes

RIGHT: Addressing diverse housing needs.
Photo: QLHCT

QUEENSTOWN LAKES COMMUNITY HOUSING TRUST

QLCHT is a pivotal force in addressing housing affordability in the region, through its public housing rental, affordable rental, rent saver and secure home ownership programmes. CLT has been a steadfast supporter of the Queenstown Lakes Community Housing Trust (QLCHT) since 2011, providing loans to fund various housing developments. This partnership exemplifies a long-term commitment to improving housing accessibility for Central Lakes district residents.

Established in response to the district's pressing housing needs, QLCHT has evolved into a recognised leader and innovator in New Zealand's community housing sector. As a registered Community Housing Provider with the Community Housing Regulatory Authority and an active member of Community Housing Aotearoa, QLCHT adheres to high standards of governance and service delivery. The trust's holistic approach involves collaborations with local social services agencies to provide wraparound support for clients, as well as partnerships with the Ministry of Social Development to deliver public housing where appropriate.

NEW GROUND CAPITAL

CLT has an investment with New Ground Capital who developed Toru East Apartments, a groundbreaking mixed-tenure housing development. The complex opened its doors in 2021 and marked a significant milestone in addressing Central Otago's housing needs. The seven-storey complex offers a diverse range of 78 one, two, and three-bedroom apartments alongside two commercial spaces, parking facilities, and communal areas.

QLHCT acquired properties in Toru apartments enabling eligible locals to purchase apartments without the burden of land costs. Another 15 apartments are managed by QLHCT as public housing as part of their partnership with the Ministry of Social Development.

This innovative project exemplifies a balanced approach to housing, seamlessly integrating rental, owner-occupied, and social housing units under one roof.

SOUTHERN CROSS CENTRAL LAKES HOSPITAL

Southern Cross Central Lakes Hospital (SCCLH) is a 50/50 joint venture between CLT and Southern Cross Healthcare Limited. The hospital received its first patients in January 2022 and has since developed a range of specialty surgery offered to both private patients and patients outsourced by Health NZ. The mix of surgery currently being offered includes Orthopaedic, General, Gynaecology, Plastics, Urology, Ophthalmology, and ENT. Joint replacement surgery was initiated in December 2022 and demonstrates the increasing but safe speed in the growth of services. The joint venture ownership ensures leading clinical service delivery whilst making more planned procedures available to the population of Central Otago. Approximately 50% of patients receiving treatment at SCCLH are non-private insurance patients, meaning half are either ACC or Health NZ patients. This mix delivers on the initial vision of making a meaningful impact to a wide range of people in the southern region.



Enjoying the hoop workshop supported by CLASS.

CLT INITIATIVES



ABOVE:
Getting creative at Light Up Winter

BELOW:
Honing their craft at the QT Writers Festival

Central Lakes Trust (CLT) initiatives provide funding to deliver services identified by CLT as strategic priorities or to address direct community needs not otherwise met in the region.

PRESBYTERIAN SUPPORT OTAGO EMERGENCY HEATING FUND
- EST. 2004

CENTRAL OTAGO PRINCIPALS ASSOCIATION REFERRAL PROGRAMME
- EST. 2006

AQUARIA IN REST HOMES
- EST. 2007

CENTRAL LAKES TRUST SCHOLARSHIP FUND
- EST. 2007

CENTRAL LAKES ART SUPPORT SCHEME (CLASS)
- EST. 2008

SWIM SAFE PROGRAMME
- EST. 2010

EMERGENCY PREPAREDNESS KITS
- EST. 2020

CLT EMERGENCY RESPONSE FUND
- 2020 TO 2024

CENTRAL LAKES ART SUPPORT SCHEME (CLASS) ESTABLISHED 2008

CLASS was created to increase, at a local level, both participation in the arts and the diversity of arts available to the community. These grants are administered by the four Community Arts Councils in our region:

- Alexandra Community Arts Council
- Creative Queenstown
- Arts Central
- Upper Clutha Community Arts Council

CLASS grants define “arts” as “all forms of creative and interpretive expression”, including language, arts and literature, performing arts, visual arts, and multi-disciplinary projects which cross over two or more of the above categories.

The scheme has been instrumental in supporting grassroots organisations and projects, giving more people the opportunity to discover the joy of the arts.



2023 Scholarship recipients.
Photo: Clare Toia-Bailey

CENTRAL OTAGO PRINCIPALS ASSOCIATION REFERRAL PROGRAMME ESTABLISHED 2006

The Central Otago Principals Association Referral Programme is an initiative that provides the five high schools in the CLT region with funding to support students with high needs and/or behavioural issues. Grants are awarded based on student numbers at each school, allowing for tailored implementation based on the needs identified by each principal.

This programme allows for students to receive individual or small group attention. This approach not only benefits these students but also reduces classroom disruptions, enhancing the learning environment for the entire student population.

CENTRAL LAKES TRUST SCHOLARSHIP FUND ESTABLISHED 2007

Each year CLT awards Scholarships to individuals from our secondary schools and colleges wishing to commence their first year full-time tertiary education. In 2024, we extended our partnership to include local students studying through correspondence school Te Aho o Te Kura Pounamu.

Students can use these scholarships to help fund their first year full-time tertiary studies in academic or vocational fields. In addition to these scholarships, Pioneer Energy awards scholarships to students going into science and technology.

Since inception in 2007, CLT has awarded 684 scholarships to a total amount of \$1,676,500.



Salsa classes

*Whatungarongaro te tangata,
toitū te whenua*

*As people disappear from sight,
the land remains*

OUR COMMITMENT TO THE ENVIRONMENT



This whakatauki speaks of the importance and permanence of the land. It underscores the profound connection we have with our environment and the vital role we play in its stewardship. The land is not merely a resource but a cherished legacy that sustains us and will sustain future generations. Recognising this, it is our responsibility to protect and preserve the land, ensuring its health and vitality for those who come after us. This is why we are dedicated to reducing our impact on the environment. By actively working to lower our CO2 emissions, we aim to mitigate the effects of climate change and safeguard the natural world. Our commitment to sustainability reflects our deep respect for the land and our duty to pass it on, unspoiled, to future generations.

In 2023, our team attended a greenhouse gas emissions (GHG) accounting workshop hosted by Wao and conducted by Environmental Accounting Services (EAS) to gain a better understand of our environmental impact.

We have also joined with other funders across New Zealand in signing the Funders Commitment on Climate Action. By signing the commitment, we commit to responsibly investing in a just transition towards a green, low-carbon society.

EMISSIONS (tCO2e)

	CLT PARENT	PIONEER ENERGY *	CLT GROUP
Scope 1 - direct emissions	7.23	10,640.00	10,647.23
Scope 2 - emissions from purchased electricity	3.08	250.00	253.08
Scope 3 - indirect emissions	23.10**	3,123.00	3,146.10
Total	33.41	14,013.00	14,046.41

*Excludes Pulse Energy

** Excludes investment portfolio

Ferns Photo: Douglas Bagg on Unsplash
Tui Photo: Callum Hill on Unsplash

PIONEER ENERGY

Pioneer Energy, a subsidiary of CLT, is a proven leader in alternative energy solutions and their sustainability vision is to create a better future through sustainable energy.

Pioneer had a positive result for the financial year ended 31 March 2024 with earnings before interest, tax, depreciation, amortisation and fair value movement of derivatives of \$43.4m (2023 \$35.9m).

This positive result reflects one off development margins from projects such as their windfarm at Kaihiku, efficient day to day management of water to produce electricity in opportune market pricing windows and continued positive results in their partnered business with specific regard to generation (Southern Generation Limited Partnership) and retail (Pulse Energy Alliance Limited Partnership).

The Ecogas Limited Partnership providing anaerobic digestion (waste to energy) services to Auckland City Council and other commercial and industrial customers finished its first year of operation. This diversion of waste from landfill will continue to be a good news sustainability story for Pioneer and New Zealand.

As a community-owned organisation with a proud legacy of 100 years of operation, they acknowledge sustainability is not just about the impact on the natural environment but also outcomes for their people, and the communities in which they operate.

They have elected to measure progress against the United Nations Sustainable Development Goals (SDGs) across the key areas of Environment, People, and Business.

ENVIRONMENT

Given the impact of climate change, their primary focus in the environmental pillar of their Sustainability Framework is decarbonisation. Each of their strategic focus areas below includes opportunities for reducing Aotearoa New Zealand's emissions, including through increasing their renewable energy portfolio.

PEOPLE

Pioneer Energy is proud to employ a diverse range of people with a diverse range of skills around the country. Their health, safety, and well-being, and professional development opportunities are critical components of their holistic sustainability framework. As a community-owned organisation, how they show up in their communities is also critical and they are always working to create a positive impact on the regions they operate in.

BUSINESS

Pioneer Energy's assets and offices have a national footprint, and they work hard to meet the highest international standards. They are proud to be accredited with international standards ISO55001, ISO45001, and ISO14001, as well as public safety NZ7901

STATEMENT OF SERVICE PERFORMANCE

FOR THE YEAR ENDED 31 MARCH 2024

WHO ARE WE?

Central Lakes Trust (CLT) is dedicated to supporting charitable organisations within our funding region. The CLT funding region, which spans much of both Central Otago and Queenstown Lakes, was originally defined by our original benefactor, the Otago Central Electric Power Trust. As a charitable trust, our primary focus is to distribute funds to a diverse array of charitable initiatives that enrich the communities across this vibrant area.

Since inception in November 2000, CLT has grown its asset base from the \$155 million settled by the Otago Central Electric Power Trust to assets totalling over \$495 million. As at FYE 31 March 2024, CLT has granted \$146.4 million to various charitable community programmes and projects across our region.

CLT is proud of its ownership in Pioneer Energy Limited (Pioneer Energy) which comprises approximately 35% of CLT's investment portfolio.

Pioneer Energy's business now includes – both through direct investment and through various joint ventures – a retail electricity distributor, multiple hydro and wind generation sites, and energy solutions throughout New Zealand. Pioneer Energy is governed by an independent Board of Directors.

The remainder of CLT's investments are made up of a diversified portfolio which includes a range of national and international investments, in three asset classes:

- Growth Assets
- Alternative Growth/Fixed Interest Assets
- Income Assets.

CLT has allocated a percentage of funds to invest in social impact investments which, in addition to a financial return, generate a measurable community benefit to the CLT region. CLT continues to proactively seek out opportunities to increase these investments.

CLT operates under a Trust Deed and is governed by a Board of three appointed, and five publicly elected trustees. The Board has established committees to assist the Board and provide advice and recommendations to the Board for its consideration.

WHY DO WE EXIST?

CLT's purpose is to ensure that funds can be available over time to help support charitable projects throughout its funding region to enhance the community and the lives of its residents.

One of CLT's primary objectives is to grow its capital base so that funds are available in perpetuity for the benefit of future generations. The ability to fund annual grants is dependent upon the performance of CLT's investments and the adequacy of its reserves.

CLT'S STRATEGIC PRIORITIES:

INVESTMENTS

Manage our investment portfolio to maintain our fund in perpetuity.

COMMUNITY

Address the needs and opportunities of our region in collaboration with stakeholders and community.

HIGH PERFORMING ORGANISATION

Ensure we have effective processes and resources in place to enable us to achieve our vision.

CLT'S MEDIUM TO LONG TERM GOALS:

INVESTMENT

CLT expects an annual dividend from its ordinary shares in Pioneer Energy to return a minimum of 7% on the current valuation of the company over the long-term.

In terms of its other investments, CLT is a long-term investor and aims to ensure its Reserving Position is greater than its Hard Benchmark and manages its portfolio in accordance with a Statement of Investment Policies and Objectives.

COMMUNITY

CLT aims to make grants across all its charitable sectors and funds a wide range of projects and programmes across its funding region.

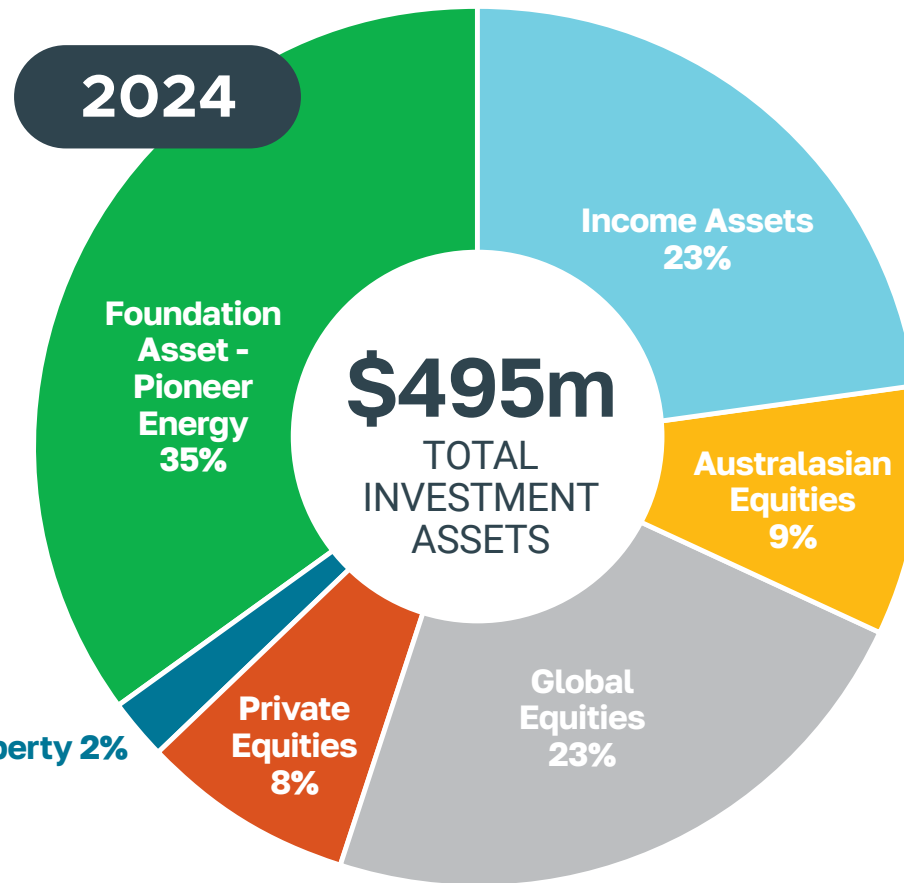
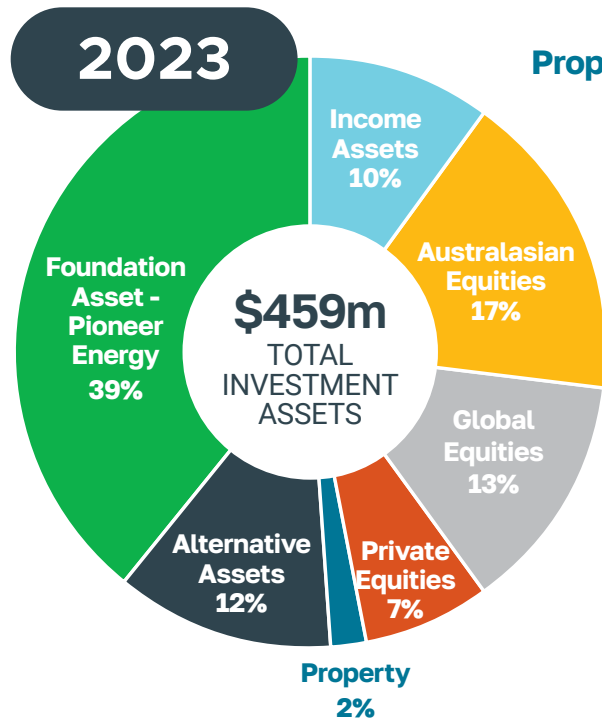
WHAT DID WE DO AND HOW DID WE PERFORM?

Key Judgements: In preparing the Statement of Service Performance and Annual Report, significant judgement is required regarding the elements of service performance reported and how those elements are measured or described. Management have elected to report on performance measures that reflect the objectives of CLT as stated in CLT's Strategic Plan and Trust Deed.

INVESTMENT PORTFOLIO

As a long-term investor, we manage our investment portfolio in accordance with our Statement of Investment Policies and Objectives (SIPO), which we formally review annually.

CLT invests its funds as follows:



PIONEER ENERGY LIMITED

CLT's founding asset investment is in Pioneer Energy and is valued at \$172 million and comprises ordinary shares and redeemable preference shares.

CLT expects an annual dividend from its ordinary shares in Pioneer Energy to return a minimum of 7% on the most recent valuation of the company. CLT acknowledges that Pioneer Energy's financial performance can be negatively impacted by several factors and therefore takes a medium to long term view (five plus years) for the dividend calculations to allow a smoothing effect and to help cater for market volatility. Pioneer Energy paid \$8.8 million in dividends, a return of 7% on the most recent valuation of the company. Pioneer Energy also paid \$4.0 million in interest on Redeemable Preference Shares (RPS), a return of 8% on the value of the RPS.

SOCIAL IMPACT INVESTMENTS

CLT aims to make social impact investments of up to \$20 million. Social impact investments are investments that are intended to provide a financial return and generate a measurable community benefit to the CLT region.

As at year end social impact investments amounted to \$10.1 million and comprised of:

INVESTMENT	PROJECT	2024 \$m	2023 \$m
Queenstown Lakes Community Housing Trust	Community housing development in Queenstown Lakes District (Shotover Country and Hikuwai)	4.0	4.1
New Ground Capital	Mixed tenure housing project in Frankton – Toru Apartments	2.9	2.4
Southern Cross CLT Hospital	Hospital	3.2	2.7

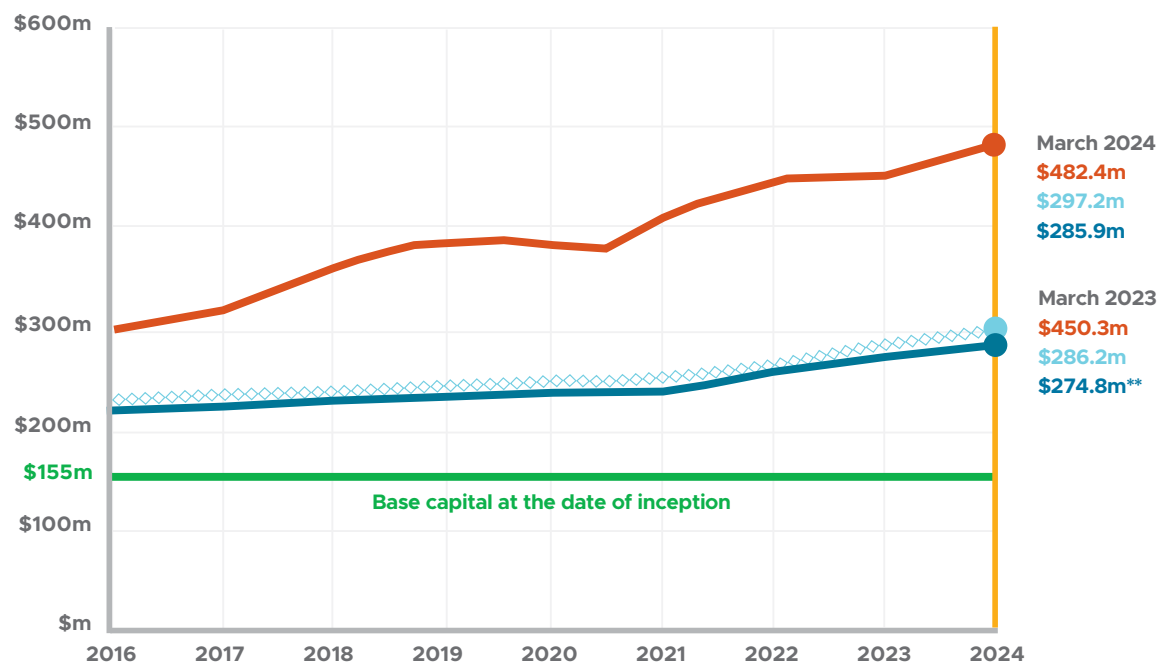
RESERVING FRAMEWORK

The Reserving Framework is a tool CLT uses to monitor its investment portfolio and to aid its decision making. The Reserving Position is defined as Total Assets less Total Liabilities. CLT strives to maintain a Reserving Position that sits above the Hard Benchmark. To preserve CLT's capital over the long-term, it is preferable that the value of the Reserving Position not fall below the Hard Benchmark.

CLT's Hard Benchmark has been restated at \$286 million in March 2024 due to the change in methodology which removed the population adjustment. Trustees were advised that maintaining the population adjustment within the reserving calculation in a climate of fast-paced population growth could result in a situation where the fund is growing but unable to distribute funds until such time as the population or inflation falls well below current levels.

The Reserving Position increased significantly over the year (up \$32 million). This was influenced by favourable investment market returns, especially in global equities, led by the strong performance of companies in the United States and the technology sector.

Overall investment return for the period was 8.8% (2023: 1.2%).



Hard Benchmark

The Hard Benchmark is base capital (\$155 million) adjusted for CPI since inception. CLT monitors its Reserving Position aiming to remain above the Hard Benchmark, therefore protecting our capital for future generations.

Soft Benchmark

CLT maintains a Soft Benchmark above the Hard Benchmark, which equates to a rolling three-year average of actual grants approved and operating costs. The three years of granting and operational expenditure has been formulated to allow CLT to continue to support the community whilst still protecting our capital for future generations in times when world events such as COVID-19 affect our Reserving Position.

Reserving Position*

Total CLT Assets less Total CLT Liabilities.

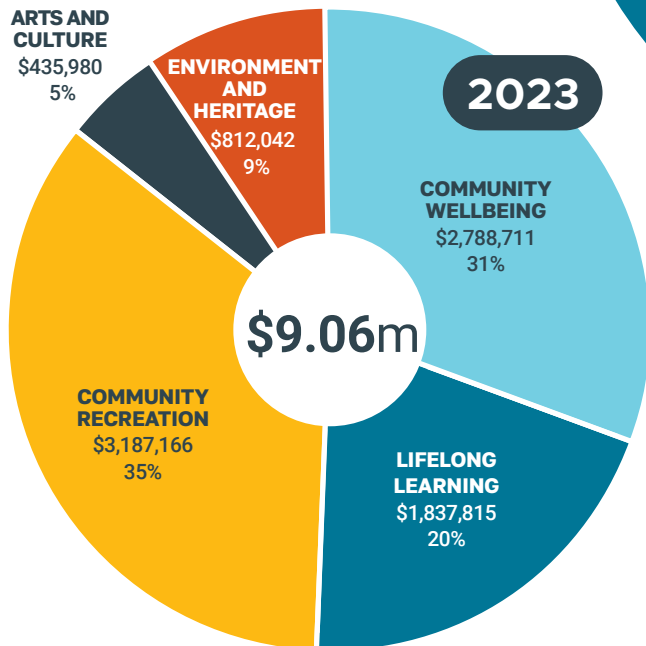
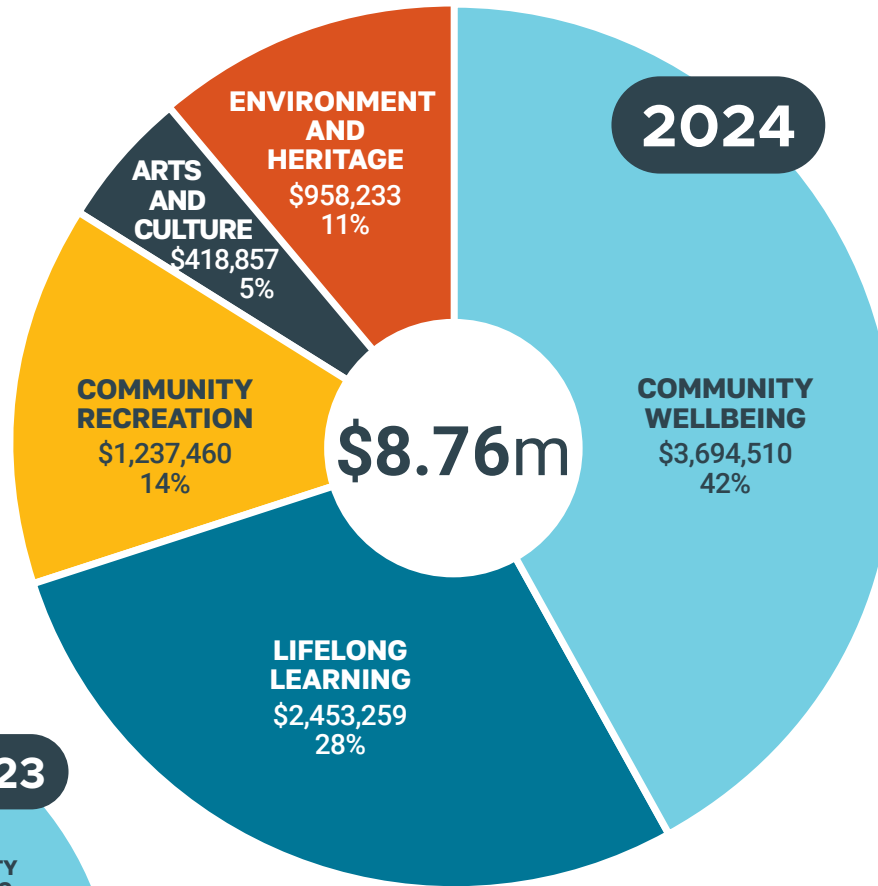
*The reserving position is a measure calculated from CLT's result and does not align with the Group financial statements.

** The Hard Benchmark has been restated with the removal of the population adjustment.

COMMUNITY

CLT makes grants across all its charitable sectors and funds a wide range of projects and programmes across the Central Lakes region. For the year ended 31 March 2024 CLT granted \$8,762,400 (2023: \$9,061,700) through the provision of 179 grants (2023: 169). The figures shown in the financial statements differ from these figures as each year the trustees make decisions on granting activity which may impact future years. Whilst this decision is accounted for in the year in which the decision is made, the reporting on granting activity for the year, reflects the year in which the grant relates.

Our grants are categorised into five different sectors:



CLT makes grants across the Central Lakes region:

TOWN	2024	2023
Alexandra	\$1,248,000	\$1,032,200
Arrowtown	\$335,700	\$462,000
Bannockburn	\$115,000	\$109,600
Clyde	\$262,500	\$344,000
Cromwell	\$1,401,700	\$1,038,500
Glenorchy	\$44,300	\$49,200
Lake Hāwea	\$306,000	\$37,600
Luggate	\$71,700	\$112,500
Makarora	\$106,800	\$64,900
Millers Flat	\$20,100	\$108,300
Omakau	\$108,800	\$107,900
Poolburn	\$5,600	\$8,600
Queenstown	\$2,791,500	\$2,487,500
Roxburgh	\$193,500	\$432,900
St Bathans	\$4,300	\$9,000
Tarras	\$12,000	\$36,200
Wānaka	\$1,734,900	\$2,282,400
Total	\$8,762,000	\$9,061,000

FINANCIALS

The summary financial statements are presented for Central Lakes Trust Group which fully consolidate the Pioneer Energy Limited Group financials. Central Lakes Trust being the parent entity recorded a surplus of \$32.1 million and achieved a net investment return of 8.8% inclusive of dividends and other payments from Pioneer Energy Limited.

Pioneer Energy Limited Group's underlying financial performance records an Earnings Before Interest, Tax, Depreciation, Amortization and Fair value movement of derivatives (EBITDAF) of \$43.4 million. It recorded a net surplus after tax of \$20.2 million.

Included with the grants approved in the 2023/2024 financial year grants also approved for out-years to 2026/2027 totalling \$3.6 million together with an amount of \$565,000 approved 2023-2024 or prior relating to the 2024/2025 year. We refer to these as multi-year grants. Multi-year grants are approved where CLT recognises the need for social service providers to have certainty of funding for future service provision.

CENTRAL LAKES TRUST GROUP Summary of Financial Statements

SUMMARY CONSOLIDATED STATEMENT OF COMPREHENSIVE REVENUE AND EXPENSES for the year ended 31 March 2024

	Group	
	2024	2023
	\$000	\$000
Revenue from Exchange Transactions		
Investment Gains/(Losses)	34,898	(5,840)
Generation, Retail and Energy	67,542	101,367
Other Revenue	11,277	2,957
	113,717	98,484
Less Expenses		
Cost of Sales-Electricity	18,534	48,300
(Gain)/Loss on fair value of electricity derivatives	18,007	(21,406)
Depreciation & Amortisation Expense	8,319	6,620
Finance Costs	10,379	7,145
Operating Items	25,896	55,208
	81,135	95,867
Net Operating Surplus/(Deficit)	32,582	2,617
Less Grants Approved	(10,858)	(8,666)
Add Grants Rescinded	117	185
	21,841	(5,864)
Gains/(losses) on foreign exchange derivatives	-	17
Share of Surplus / (Deficit) from Joint Ventures	16,628	(38,337)
Gain on disposal of equity accounted interest in joint venture	7,037	-
Net Surplus (Deficit) for the year	45,506	(44,184)
Other Comprehensive Revenue or Expense		
<u>Item that may be reclassified subsequently to surplus or deficit</u>		
<i>Cash Flow Hedges</i>		
Fair Value gain/(loss) on Interest Rate Swaps	(741)	3,017
Fair Value gain/(loss) on Foreign Exchange Contracts	-	5
Other Comprehensive Revenue or Expense for the year	(741)	3,022
Total Comprehensive Revenue and Expense for the year	44,765	(41,162)

These Summary Financial Statements should be read in conjunction with the full financial statements, which are available at www.clt.net.nz

CENTRAL LAKES TRUST GROUP
Summary of Financial Statements

SUMMARY CONSOLIDATED STATEMENT OF CHANGES IN NET ASSETS/EQUITY for the year ended 31 March 2024

<u>Group</u>	General Funds	Capital Maintenance Reserve	Population Growth Reserve	Non- Hedging Controlling Reserve Interests	Total	
	\$000	\$000	\$000	\$000	\$000	
Balance at 1 April 2022	175,910	102,499	159,581	-	3,241	441,231
Total Comprehensive Revenue & Expense for the year	(44,184)	-	-	-	3,022	(41,162)
Transfer from General Funds	(40,811)	17,137	23,674	-	-	-
Balance at 31 March 2023	90,916	119,636	183,255	-	6,263	400,069
Total Comprehensive Revenue & Expense for the year	45,506	-	-	4,286	(741)	49,051
Transfer to Capital Maintenance Reserve	-	183,255	(183,255)	-	-	-
Transfer from General Funds	(11,049)	11,049	-	-	-	-
Balance at 31 March 2024	125,374	313,940	-	4,286	5,522	449,122

EXPLANATORY NOTE

The summary financial information has been derived from, and should be read in conjunction with, the Central Lakes Trust Group annual financial statements (the 'full financial statements'). The full financial statements were authorised for issue by the trustees on 6 September 2024 and are available at www.cl.t.net.nz or a copy can be requested by contacting CLT on 0800 00 11 37. The accounting policies used in these financial statements are included in the notes to the full financial statements.

The full financial statements comply with Not For Profit Public Benefit Entity Accounting Standards (PBE Standards (NFP)) and have been prepared in accordance with Tier 1 PBE Standards (NFP).

The full financial statements have been audited by Deloitte Limited and an unqualified opinion given. The summary financial information cannot be expected to provide as complete an understanding as provided by the full financial statements.

CENTRAL LAKES TRUST GROUP
Summary of Financial Statements

SUMMARY CONSOLIDATED STATEMENT OF FINANCIAL POSITION as at 31 March 2024

	<u>Group</u>	
	2024	2023
	\$000	\$000
Assets		
Non-Current:		
Investments	457,832	380,701
Investment Property	6,300	5,850
Property, Plant & Equipment	97,651	57,606
Intangibles	30,794	23,330
Derivative Financial Assets	15,719	21,937
	608,296	489,424
Current	30,295	81,757
	638,591	571,181
Liabilities		
Non-current	120,929	107,053
Current	68,540	64,059
	189,469	171,112
Net Assets	449,122	400,069
Represented by:		
Trust Capital & Reserves - attributable to the Trust	449,122	400,069
Closing Equity	449,122	400,069

CENTRAL LAKES TRUST GROUP
Summary of Financial Statements

SUMMARY CONSOLIDATED CASH FLOW STATEMENT For the year ended 31 March 2024

	<u>Group</u>	
	2024	2023
	\$000	\$000
Opening Cash	1,003	3,085
Net cash inflow/(outflow) from Operating Activities	18,920	(12,256)
Net cash inflow/(outflow) from Investing Activities	(10,500)	(7,992)
Net cash inflow/(outflow) from Financing Activities	(4,404)	18,166
	4,016	(2,082)
Closing Cash	5,019	1,003

GRANTS APPROVED APRIL 2023 - MARCH 2024

COMMUNITY WELLBEING

Able Charitable Trust	Operational Grant Jul 2023 - Jun 2024	\$60,000
ADL	Operational Grant Aug 2023 - Jun 2024	\$55,000
Age Concern Otago	Operational Grant Dec 2023 - Nov 2024	\$100,000
Age Concern Southland	Operational Grant Jul 2023 - Jun 2024	\$47,344
Alexandra Community Advice Network	Operational Grant Jul 2023 - Jun 2026	\$10,000
Alexandra Community House	Foyer modification	\$71,600
Alexandra Districts Parents Centre	Operational Grant Oct 2023 - Mar 2025	\$3,750
Alexandra Elim Church Trust	Community space development	\$250,000
Alexandra Rural Community Patrol	Operational Grant Jul 2023 - Jun 2024	\$9,500
Alexandra Senior Citizens Centre	Operational Grant Jun 2023 - May 2026	\$17,152
Alzheimers Society Otago	Operational Grant Apr 2024 - Mar 2025	\$70,000
Anglican Family Care Centre	Operational Grant Jul 2022 - Jun 2025	\$26,800
Aphasia New Zealand (Aphasia) Charitable Trust	Operational Grant - Apr 2024 - Mar 2025	\$5,000
Arrowtown Village Association	Emergency Preparedness Kit	\$5,000
Baskets of Blessing	Operational Grant Jul 2023 - Jun 2024	\$113,828
Birthright Central Otago	Programme Grant Jul 2023 - Jun 2024	\$4,830
Blind Low Vision NZ	Operational Grant Jul 2023 - Jun 2024	\$35,000
Bowel Cancer New Zealand	Operational Grant Apr 2024 - Mar 2025	\$8,100
Cancer Society of NZ, Otago & Southland Division	Operational Grant Apr 2023 - Mar 2026	\$75,040
CanInspire	Operational Grant Jul 2023 - Jun 2024	\$3,710
Catholic Social Services	Operational Grant Jan 2024 - Dec 2026	\$55,000
CCS Disability Action Southland	Operational Grant Jul 2023 - Jun 2024	\$8,500
Central and Southern Kids Educational Trust	Programme Grant Apr 2024 - Mar 2025	\$40,000
Central Lakes Family Services	Operational Grant Jul 2023 - Jun 2026	\$85,000
Central Otago Budgeting Services	Operational Grant Jul 2022 - Jun 2025	\$79,765
Central Otago Friendship Network	Operational Grant Apr 2024 - Mar 2025	\$48,350
Central Otago Riding for Disabled	Operational Grant Jan 2024 - Dec 2024	\$14,000
Central Otago Victim Support	Emergency Fund Jul 2022 - Jun 2025	\$10,000
Central Otago Victim Support	Operational Grant Jul 2023 - Jun 2024	\$7,500
Child Cancer Foundation	Operational Grant Jul 2022 - Jun 2023	\$5,000
Citizens Advice Bureau Queenstown	Operational Grant Jul 2021 - Jun 2024	\$51,654
CO Compassionate Friends	Operational Grant Jul 2023 - Jun 2024	\$10,345
Community Care Trust	Operational Grant Jul 2023 - Jun 2024	\$40,000
Community Law Otago	Operational Grant Jul 2022 - Jun 2025	\$27,872
Community Networks Wanaka	Operational Grant Jan 2024 - Dec 2026	\$180,000
Community Patrols Of New Zealand	Operational Grant Jul 2023 - Jun 2024	\$5,000
Cromwell Community House	Operational Grant Nov 2023 - Mar 2025	\$42,500
Cromwell Community Welfare Trust	Operational Grant Jan 2022 - Dec 2024	\$5,279
Cromwell Presbyterian Church	Light Party 2023	\$3,310
Cystic Fibrosis NZ	Operational Grant Oct 2023 - June 2024	\$6,000
DRC Southland	Operational Grant Jul 2023 - Jun 2024	\$15,000
Epilepsy Association of New Zealand	Operational Grant Apr 2023 - Mar 2024	\$5,000
Food for Love	Operational Grant Apr 2024 - Mar 2025	\$123,855
Frankton Volunteer Fire Brigade	Support vehicle replacement	\$75,000
Good Bitches Baking	Operational Grant Oct 2023 - Mar 2025	\$7,470
Happiness House Trust	Operational Grant Jul 2023 - Jun 2024	\$70,000
Hāwea Flat School	Emergency Preparedness Kit	\$5,000
Journeys Charitable Trust	Journeys Programme Apr 2022 - Mar 2025	\$23,567
Lake Hāwea Community Centre	Emergency generator	\$12,500
Leukaemia & Blood Cancer New Zealand	Operational Grant Apr 2024 - Mar 2025	\$12,713
Leukaemia & Blood Cancer New Zealand	Operational Grant Jun 2023 - Mar 2024	\$7,000
Livingwell Disability Resource Centre	Operational Grant Apr 2024 - Mar 2025	\$21,106
Lower South Island Snow Sports	Special Olympics 2023	\$2,726
MINT	Programme Grant Jul 2022 - Mar 2024	\$45,290
MINT	Programme Grant Apr 2024 - Mar 2025	\$45,290
Otago Community Hospice Trust	Operational Grant Jul 2022 - Jun 2025	\$107,200
Otago Community Hospice Trust	Central Otago 4wd	\$8,000
Otago Multiple Sclerosis Society	Operational Grant Jan 2024 - Dec 2024	\$8,832
Parkinson's New Zealand	Operational Grant Jul 2023 - Jun 2024	\$10,000
Path Wānaka Ara ki Wānaka	Programme Grant 2024	\$16,400
Presbyterian Support Otago	Operational Grant Jul 2022 - Jun 2025	\$85,760

Presbyterian Support Otago	Emergency Heating Fund Jul 2023 - Jun 2024	\$30,000
Presbyterian Support Southland	Operational Grant Jul 2023 - Jun 2026	\$65,000
Prime Timers	Operational Grant Jun 2023 - May 2024	\$9,900
QLDC - Corporate Services	Community emergency response equipment	\$24,361
Ronald McDonald House Charities New Zealand	Programme Grant Apr 2024 - Mar 2025	\$84,500
Rotary Club of Cromwell Charitable Trust Board	AED for Bannockburn Hall	\$1,973
Roxburgh Baptist Church	Church extension and food bank pantry	\$35,000
Royal New Zealand Plunket Trust	Operational Grant Jul 2023 - Jun 2026	\$75,000
Salvation Army	Operational Grant Jul 2023 - Jun 2024	\$155,000
SARDA NZ	Rescue equipment	\$21,000
Southland Multiple Sclerosis Society	Operational Grant Jan 2022 - Dec 2024	\$1,703
Special Olympics New Zealand	NZ National Winter Games 2023	\$7,630
SPELD NZ	Operational Grant Apr 2024 - Mar 2025	\$17,815
Sport Otago	Operational Grant Jul 2023 - Jun 2026	\$60,000
St Andrew's Anglican Church	Programme Grant Jan 2024 - Dec 2024	\$8,100
Hato Hone St John	Ambulance for Alexandra	\$100,980
Teviot Valley Rest Home	CLT Resthomes Aquaria Jun 2021 - May 2027	\$18,432
Teviot Valley Rest Home	Community garden and recreation area	\$14,000
The Brain Injury Association (Otago)	Operational Grant Apr 2024 - Mar 2025	\$15,890
The Cromwell Menz Shed Charitable Trust	Shed construction project	\$197,068
The Kiwi Kit Community Trust	Programme Grant Apr 2024 - Mar 2025	\$62,320
The Moray Foundation Trust	Operational Grant Jul 2023 - Jun 2024	\$2,600
The Stroke Foundation of New Zealand	Operational Grant Jul 2022 - Jun 2025	\$10,720
Upper Clutha Radio Telephone Association	Lake Hāwea VHF repeater unit	\$30,000
Uruuruwhenua Hauora	Operational Grant Jul 2023 - Jun 2024	\$50,000
Volunteer South	HUDDL-support for community groups	\$75,000
Volunteer South	Operational Grant Apr 2022 - Mar 2025	\$78,557
Wakatipu Search and Rescue	ACR Equipment	\$7,593
Wānaka Community Hub	Battery bank for the solar system	\$17,930
Wānaka Riding for the Disabled	Operational Grant Aug 2023 - Jul 2026	\$12,000

\$3,694,510

ARTS AND CULTURE

Alexandra Community Arts Council	Central Lakes Arts Support Scheme (CLASS) Jul 2021 - Jun 2024	\$32,149
Arrowtown Charitable Trust	Matariki Light Festival	\$12,000
Arts Central	Central Lakes Arts Support Scheme (CLASS) Jul 2021 - Jun 2024	\$21,538
Arts On Tour NZ	Programme Grant Jan 2024 - Dec 2024	\$22,454
AWE Festival	AWE Festival 2023	\$40,000
Bhartiya Samaj Queenstown	Queenstown Diwali 2023	\$8,400
Central Otago Regional Choir	Concert series 2023	\$7,933
Central Otago Regional Choir	2024 autumn and spring concert series	\$9,000
Choirs Aotearoa New Zealand Trust	New Zealand Youth Choir Tour 2024	\$6,000
Creative Queenstown	Central Lakes Arts Support Scheme (CLASS) Jul 2021 - Jun 2024	\$69,521
Fine Thyme Theatre Company	Christmas Variety Concert 2023	\$3,255
Footnote New Zealand Dance	YKYK tour - Queenstown	\$3,776
LUMA	LUMA 2022 - 2024	\$30,000
Miharo	Central Lakes Polyfest 2023	\$25,000
Rock Quest Charitable Trust	Smokefreerockquest & Tangata Beats 2023 - Central Otago	\$4,838
Rock Quest Charitable Trust	Smokefreerockquest & Smokefree Tangata Beats 2024	\$5,285
Roxburgh Entertainment Centre	Sound system replacement	\$21,774
Royal New Zealand Pipe Bands Association (Otago)	Queenstown Pipe Band Championships	\$1,870
Showbiz Queenstown	Spamalot the Musical	\$9,200
Southern Lakes Arts Festival Trust	Festival of Colour 2023 and Aspiring Conversations 2024	\$20,000
The Rodger Fox Big Band	Queenstown workshop and performance	\$7,700
Upper Clutha Community Arts Council	Central Lakes Arts Support Scheme (CLASS) Jul 2021 - Jun 2024	\$35,157
Winterstellar	Winterstellar 2023	\$8,007
WoolOn Creative and Fashion Society	WoolOn 2023	\$14,000

\$418,857

GRANTS APPROVED APRIL 2023 - MARCH 2024

COMMUNITY RECREATION

Alexandra Ice Skating Club	Ice rink sound system upgrade	\$2,120
Bannockburn Bowling Club	New kitchen	\$35,000
Central Lakes Trust	Southern Lakes Trails Cycleways maintenance fund	\$24,662
Challenge Wānaka	Junior Festival of Triathlon 2024	\$20,000
CODC - Parks and Recreation	Alexandra River Park project	\$250,000
CODC - Property	Redevelopment Cromwell Memorial Hall	\$363,042
Disc Golf Wanaka	Event trailer and power supply	\$5,000
Mountainbikers of Alexandra	Alexandra pump track	\$30,000
Otago Secondary Schools Sports Association	Programme Grant Jan 2024 - Dec 2024	\$7,600
QMTBC	Queenstown Bike Festival	\$9,500
Queenstown Trails Trust	Queenstown Trail realignment stage 1	\$187,884
Snow Sports NZ Charitable Trust	Central Lakes Adaptive Programmes 2023	\$17,500
Upper Clutha Tracks Trust	Charteris Track	\$46,527
Wānaka Primary School	COPSSA Programme Grant Apr 2022 - Dec 2024	\$10,720
Wānaka Yacht Club	Learn to Sail boats	\$4,348
Whakatipu Rowing Club	Clubhouse redevelopment project	\$223,557
		\$1,237,460

ENVIRONMENT AND HERITAGE

Central Otago Agricultural & Pastoral Association	126th Central Otago A&P Show 2024	\$8,478
Central Otago Heritage Trust	Oral history project Aug 2023 - Jul 2025	\$11,430
Forest & Bird	Grandview Creek Project	\$5,250
Friends of Bullock Creek	Operational Grant Feb 2024 - Oct 2025	\$21,875
KiwiHarvest	Operational Grant Oct 2023 - Mar 2025	\$111,775
Lake County A&P Society	Lake Hayes A&P Show 2024	\$7,000
Otago Goldfields Heritage Trust	Site review project	\$30,000
Southern Lakes Sanctuary Trust	Operational Grant Apr 2024 - Mar 2025	\$223,425
Southern Lakes Sanctuary Trust	Predator trapping project grant May 2022 - Apr 2024	\$185,000
The Lightfoot Initiative	Programmes Sep 2023 - Aug 2024	\$39,000
The QT Cats	Programme Grant Apr 2024 - Mar 2025	\$25,000
WAI Wānaka	Operational Grant Jul 2023 - Jun 2024	\$85,000
Wao	Programme Grant Apr 2024 - Mar 2025	\$150,000
Warbirds Over Wanaka Airshows	Warbirds Over Wanaka Airshow 2024	\$55,000
		\$958,233

LIFELONG LEARNING

Alexandra and Districts Youth Trust	Operational Grant Jan 2024 - Dec 2026	\$154,476
Alexandra Primary School	Mural for school redevelopment	\$4,000
Arrowtown Preschool	Sleep room extension	\$3,822
Central Otago REAP	Operational Grant Jan 2024 - Dec 2026	\$131,823
Central Otago REAP	Counsellor in Schools Pilot Programme Jul 2022 - Jun 2024	\$30,000
CLT Scholarships 2023	CLT Scholarships 2021 - 2023	\$125,000
Clyde School	Junior playground upgrade	\$15,450
COEC	Resource modernisation project	\$6,000
Cromwell College	COPAR Jan 2023 - Dec 2025	\$20,504
Cromwell Primary School	Outdoor learning environment	\$100,000
Cromwell Youth Trust	Operational Grant Jan 2022 - Dec 2024	\$208,868
Dunstan High School	COPAR Jan 2023 - Dec 2025	\$19,879
Graeme Dingle Foundation Southern	Programme at WHS Jan 2024 - Dec 2026	\$26,040
Hāwea Playgroup	Playscape project - stage 1	\$6,615
Kahu Youth	Operational Grant Jan 2024 - Dec 2026	\$260,000
Life Education Trust	Operational Grant Jan 2024 - Dec 2024	\$30,000
Mount Aspiring College	COPAR Jan 2023 - Dec 2025	\$45,648
Mt Aspiring Outdoor Education Trust	Generator project	\$6,000
Pivotal Point	Operational Grant Nov 2023 - Mar 2025	\$70,833
Queenstown Primary School	Playground upgrade	\$213,029
Road Safety Education	Programme Grant RYDA 2024	\$5,000
Roxburgh Area School	COPAR Jan 2023 - Dec 2025	\$5,485
Shotover Primary School	Shade sails	\$3,100
Southern REAP	Drive My Life programme Jan 2024 - Dec 2024	\$34,600
Sport Otago	Swim Safe programme Jan 2024 - Dec 2026	\$207,709
Sticks 'n Stones	Programme Grant Jan 2024 - Dec 2024	\$90,196
Te Kura O Take Kārara	Community shared outdoor spaces	\$80,000
Te Kura Whakatipu o Kawarau	School hall AV project	\$30,000
The Boys Brigade in New Zealand	ICONZ Edge programme Jan 2024 - Dec 2024	\$23,176
Transition to Work Trust	Mana Rangatahi programme Jan 2024 - Dec 2024	\$73,242
Upper Clutha Presbyterian Church	Youth Workers in MAC Programme Grant Jul 2022 - Jun 2025	\$13,000
Wakatipu High School	COPAR Jan 2023 - Dec 2025	\$44,764
Whakatipu Youth Trust	Operational Grant Jan 2024 - Dec 2026	\$320,000
Youth Employment Project	Operational Grant Jan 2024 - Dec 2026	\$45,000
		\$2,453,259

TOTAL GRANTS APPROVED THROUGHOUT OUR REGION 2023/24

\$8,762,319



190 Waenga Drive, PO Box 138, Cromwell 9342, Central Otago, New Zealand

Freephone: 0800 00 11 37 | Phone: 03 445 9958 | Email: info@clt.net.nz

Proud owner of **Pioneer**
energy
